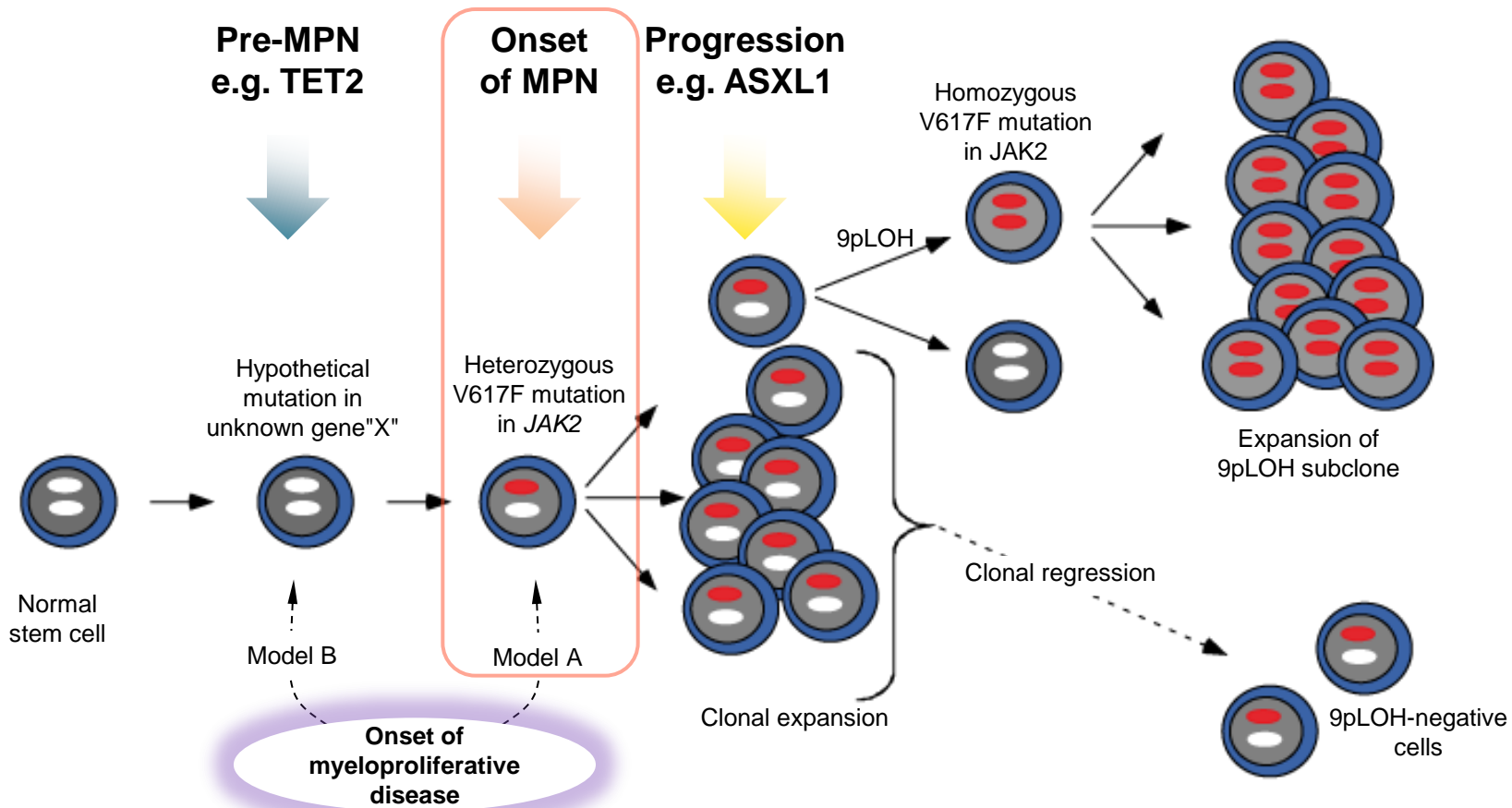


Genetic and Biologic markers in MPNs: How have they influenced clinical practice?

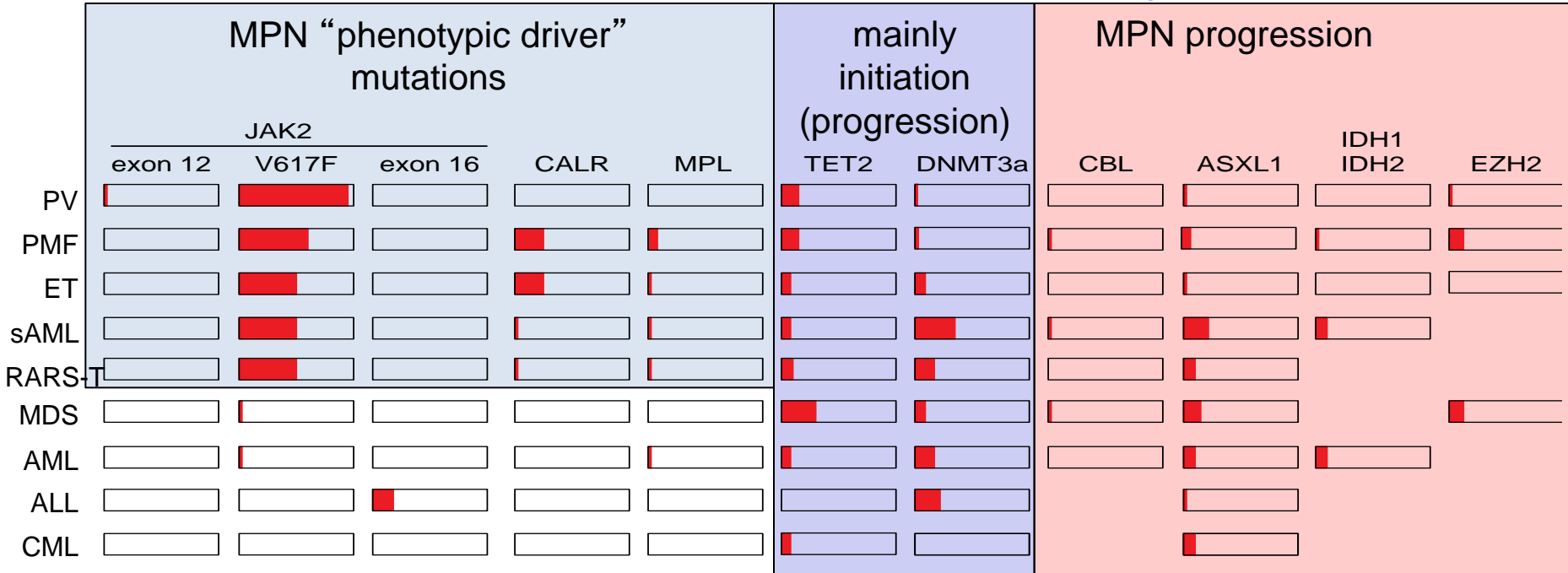
Professor Radek Skoda,
Department of Biomedicine,
University Hospital Basel,
Switzerland

Model

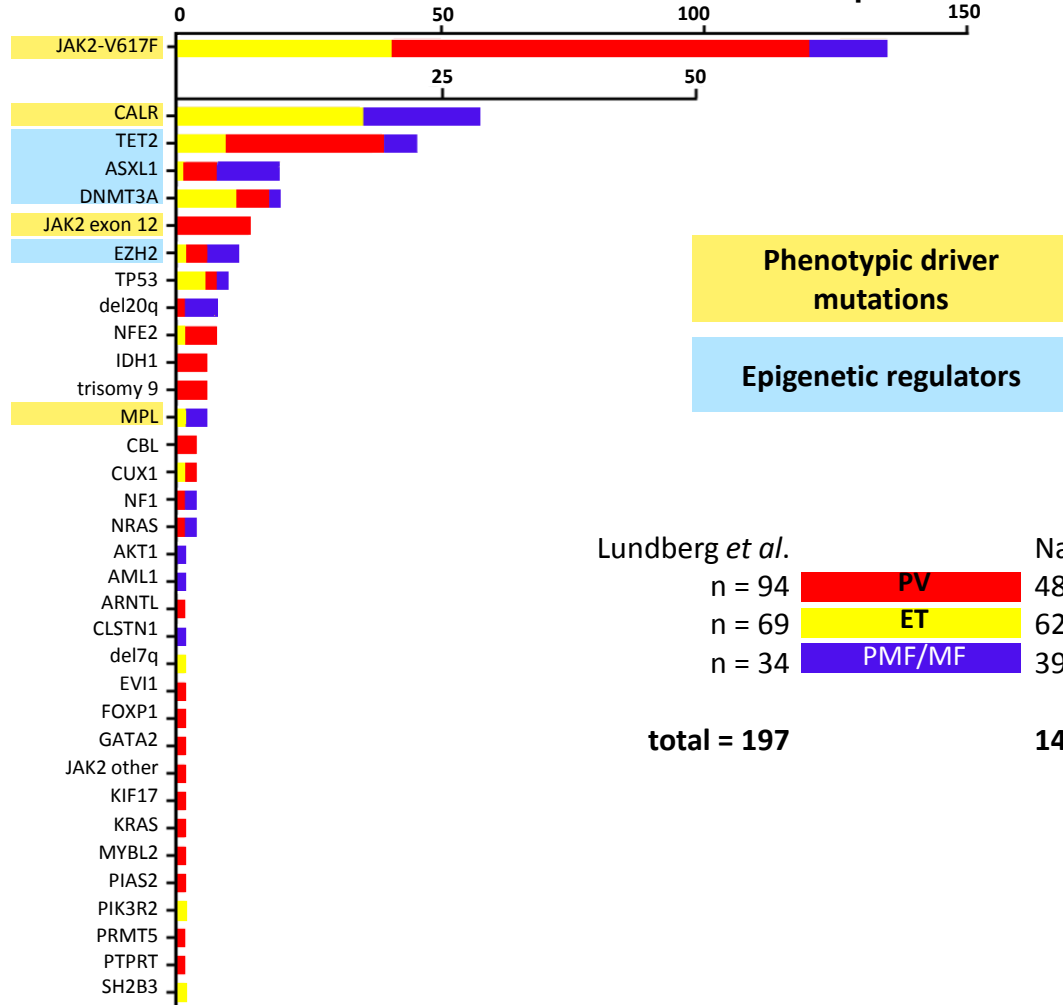


MPN mutations overview

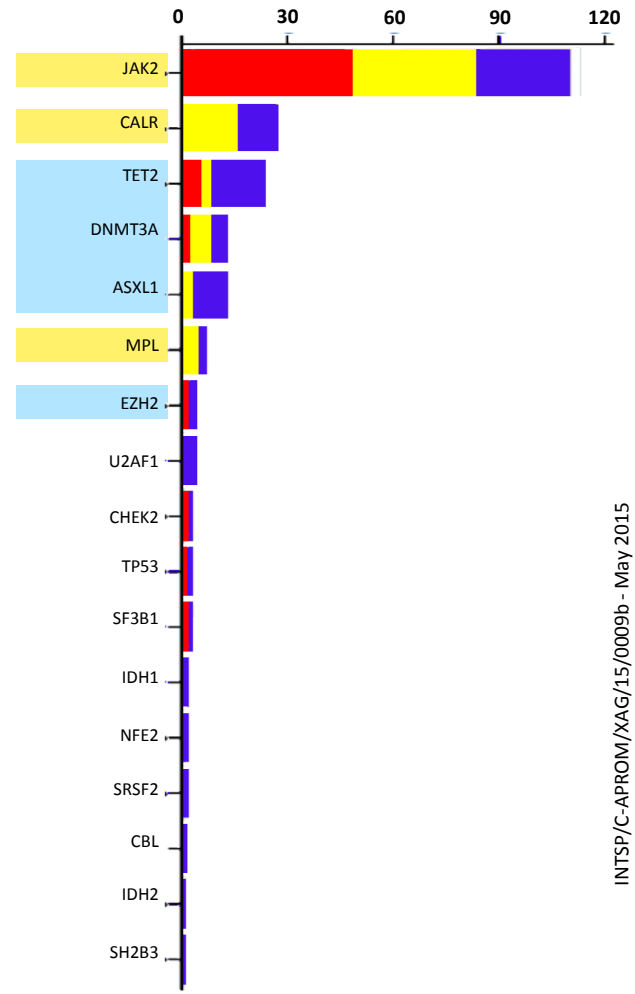
“non-phenotypic driver” mutations
 “important passenger mutations”



Number of patients with mutations



Lundberg <i>et al.</i>		Nangalia <i>et al.</i>
n = 94	PV	48
n = 69	ET	62
n = 34	PMF/MF	39
total = 197		149

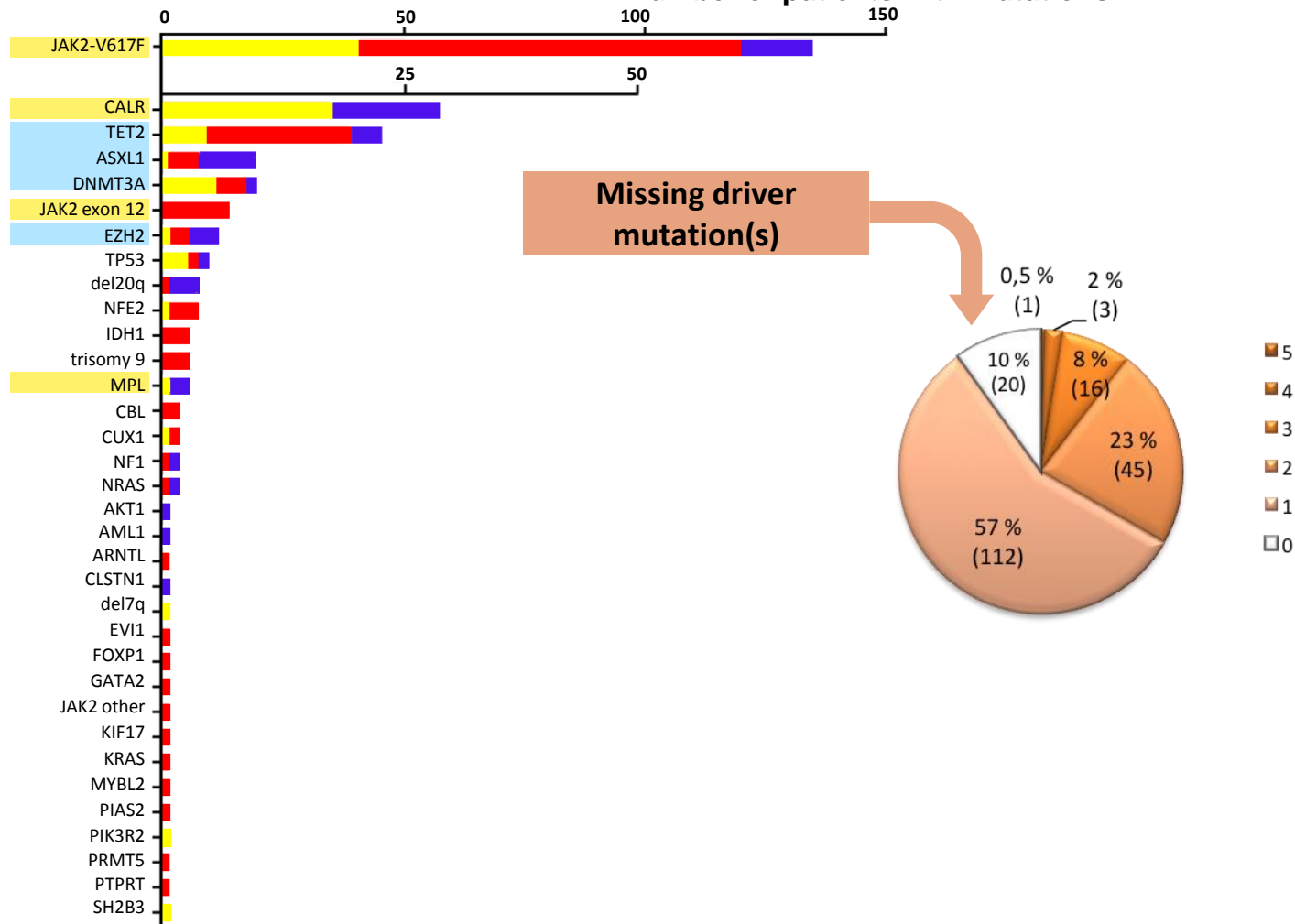


INTSP/C-APROM/XAG/15/0009b - May 2015

Adapted from Lundberg P, *et al. Blood*. 2014;123: 2220-28.

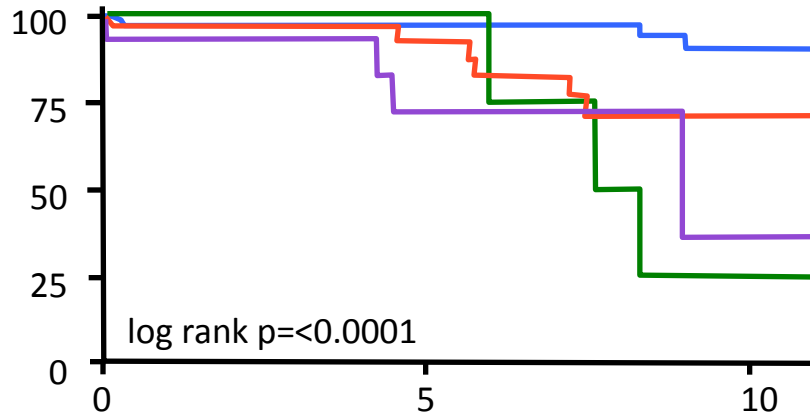
Adapted from Nangalia J, *et al. N Engl J Med*. 2013;369: 2391-405.

Number of patients with mutations

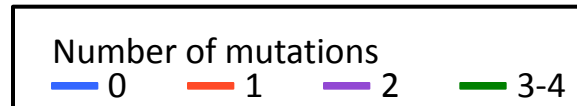
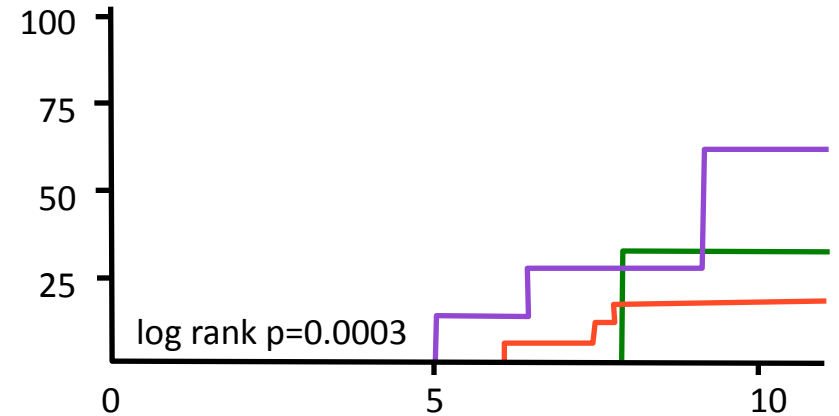


Mutational profile and outcome

Survival



Transformation to AML



Model

